

HAUTE COUTURE 2020/2021

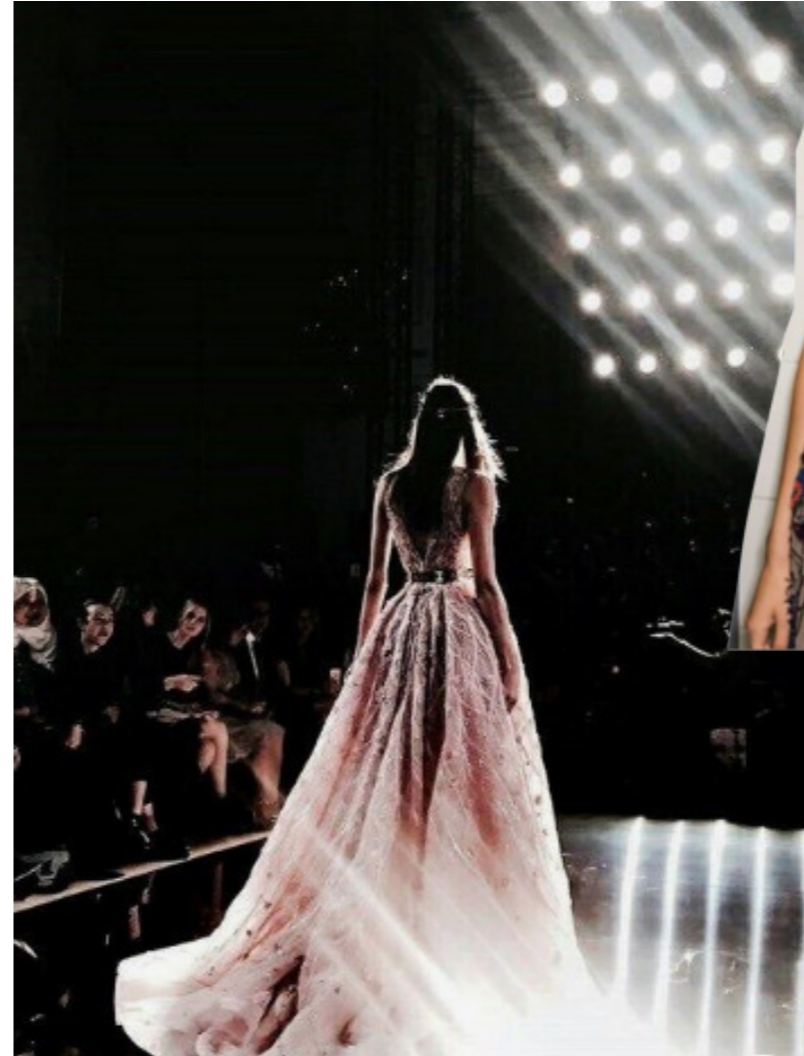
BAD couture



BAD couture

ISABELLA PADOAN

BAD couture



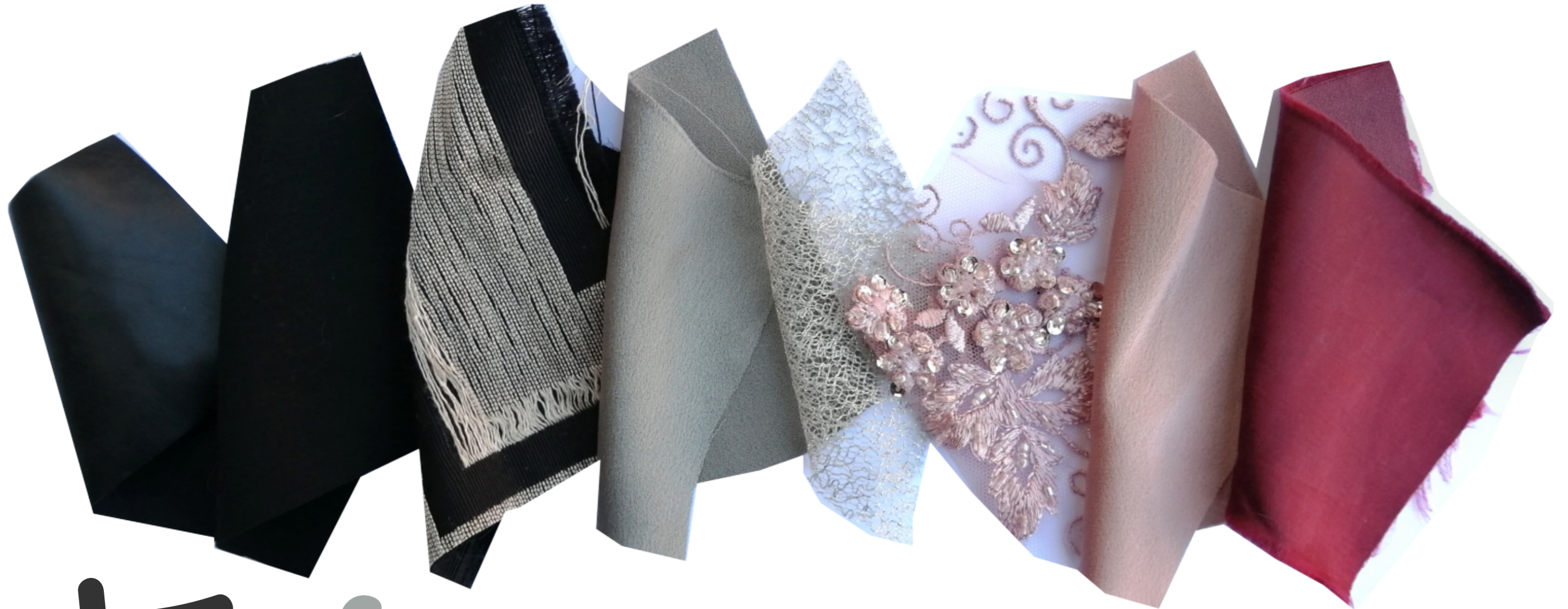
Bad Couture is an haute couture capsule collection where the main inspirations are the punk movement and a rockstar attitude, inserted in a luxury mood. You can find elegant dresses mixed with "rock" t-shirts, a dark image for a graceful woman.

In this collection I show my passion for the haute couture taking inspiration from other interests like the music and concerts.

The kind of woman for this collection is strong, trasgressive, posh and refine at the same time.

The kind of woman who can participate to exclusive events but her favourite event is a concert of ACDC.

A mix of materials where a fine lace meets an heavy jersey, a silk chiffon meets an eco-leather. The materials used are preciously worked. You can find particular volumes, for example the oversized jacket and the wide gowns.



NOT

JET BLACK
19-0303 Tcx

So

BELGIAN BLOCK
15-4306 Tcx

BAD

STORM GRAY
15-4003 Tcx

BAD

SILVER

BAD

ROSE DAWN
16-1552 Tcx

BAD

RUMBA RED
19-1940 Tcx



PINK LACE

SILVER MESH

PINK SILK SATIN
GREY SILK SATIN

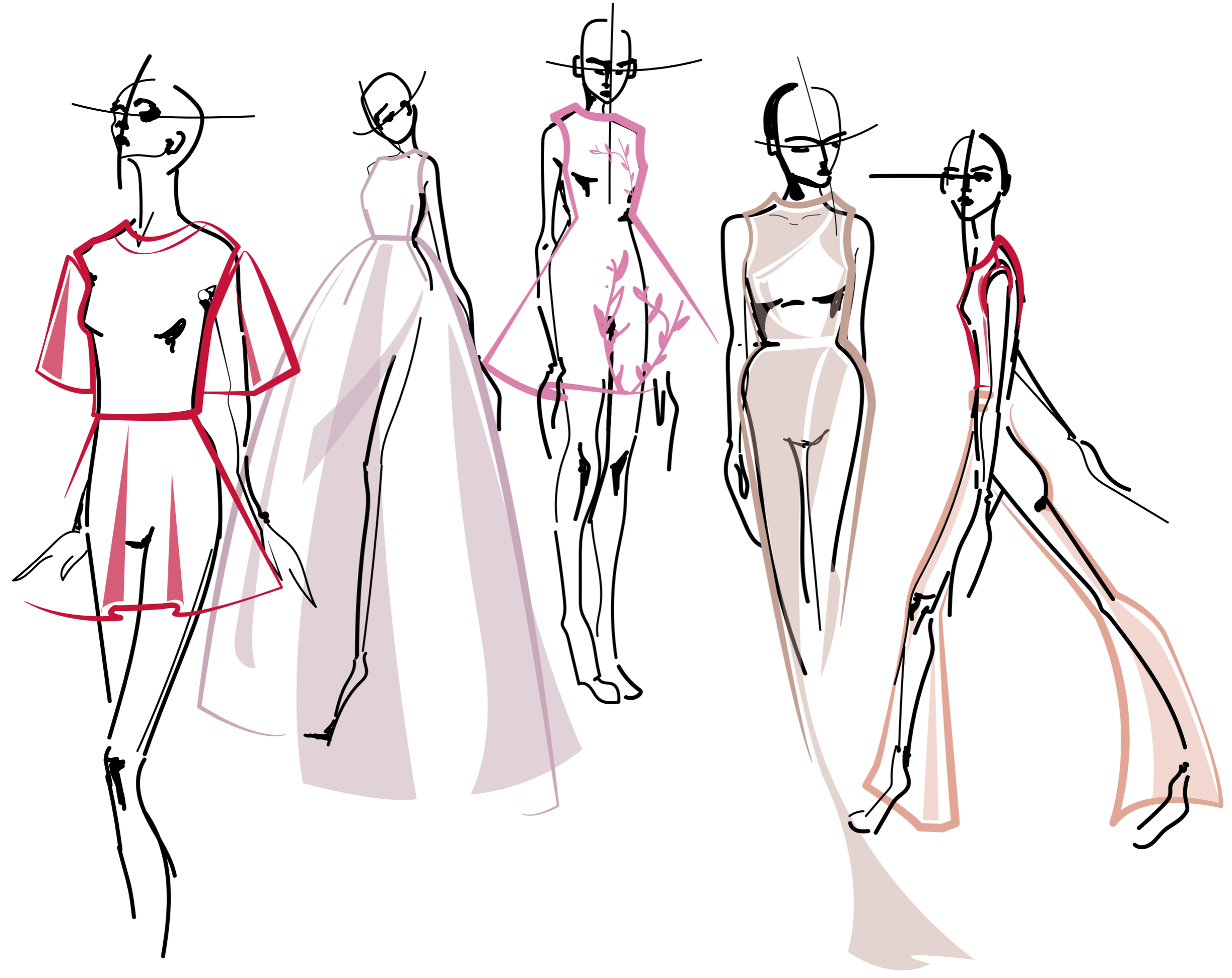
VELVET

WORKED FABRIC

JERSEY

VEGAN LEATHER

BAD *couture*
silhouette chart







WHITE



PINK NEON



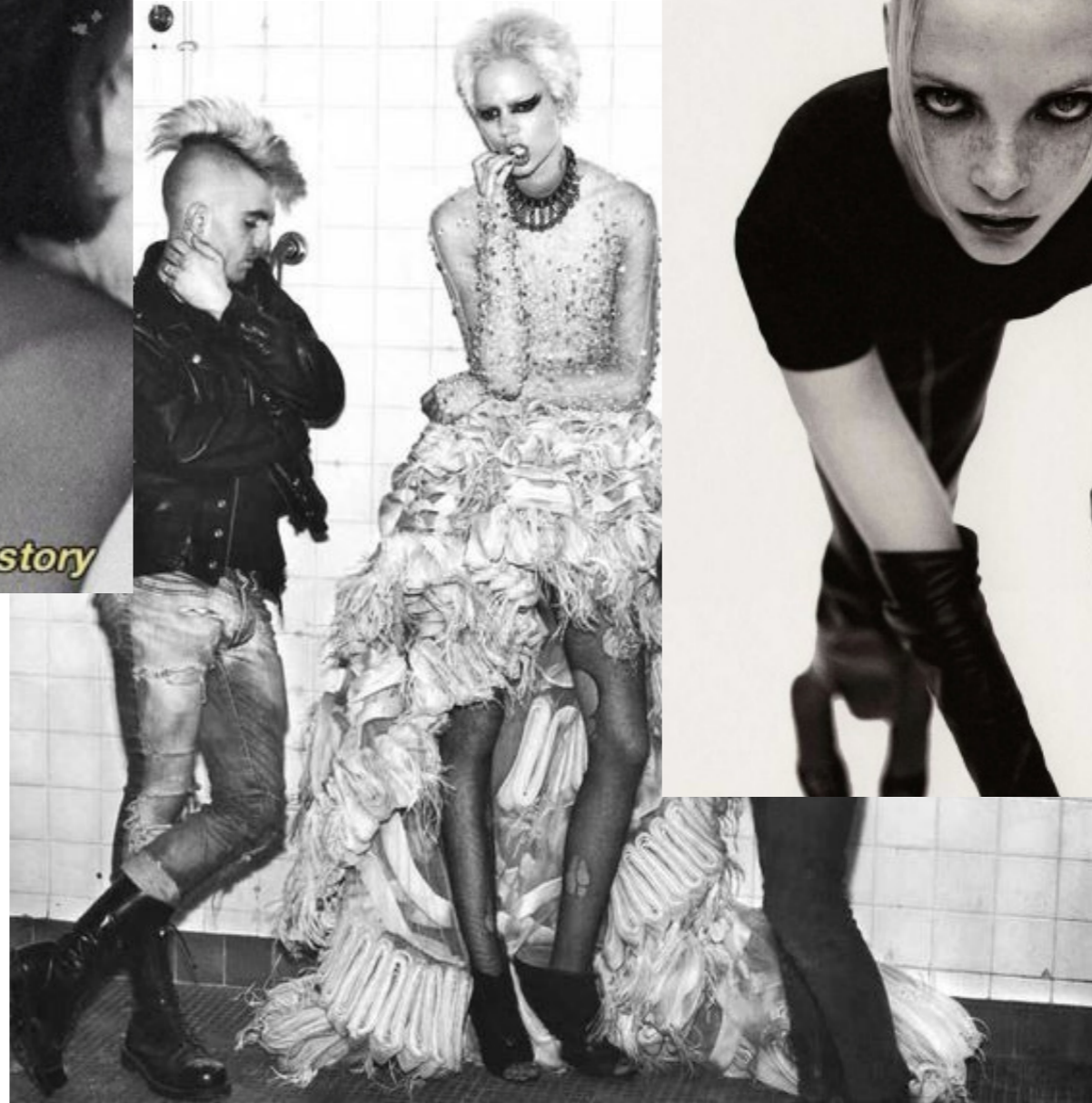
RUMBA RED



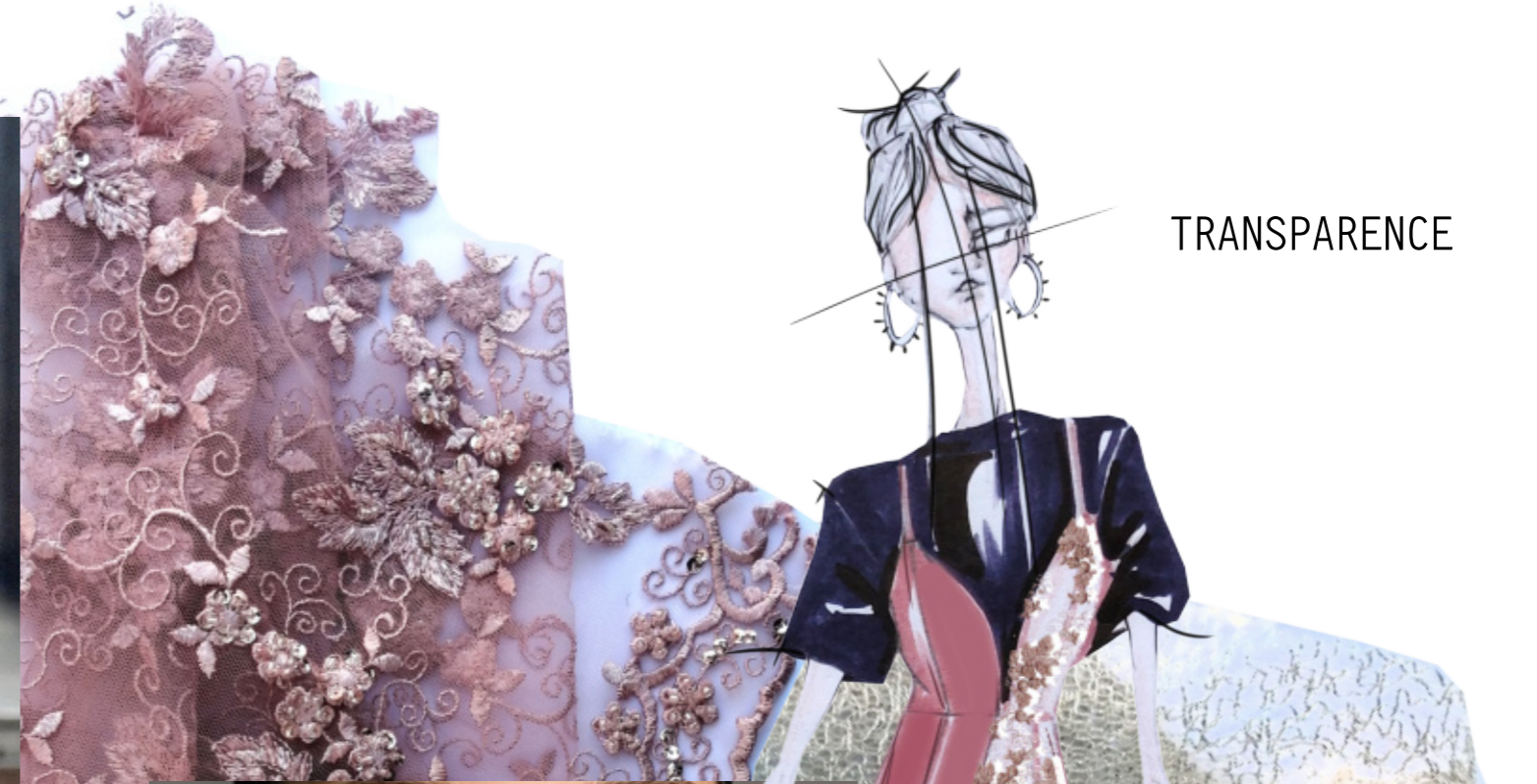
SOPHISTICATED LOOK



We're all bad in someone's story



PUNK ATTITUDE



TRANSPARENCE



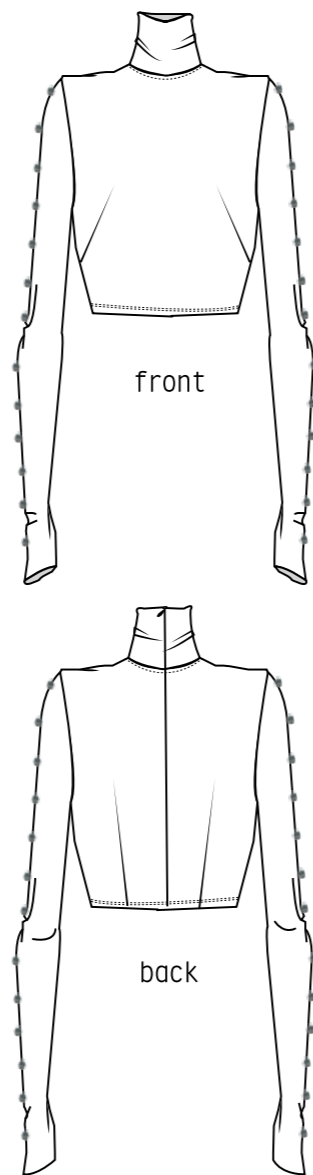
PRINCESS SHAPE



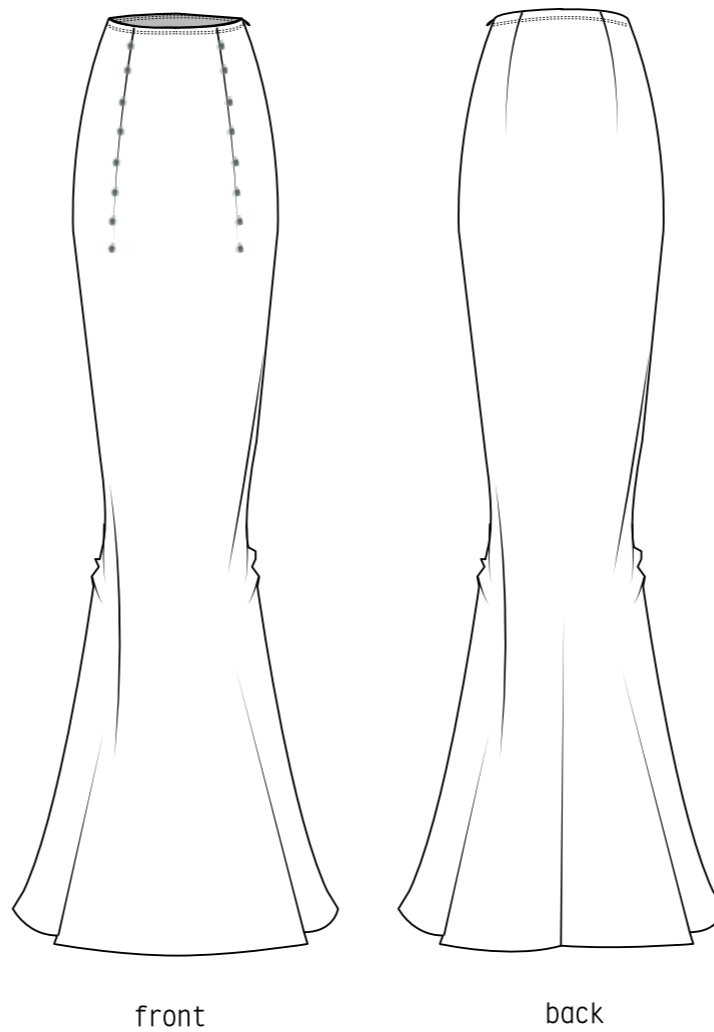
MERMAID SHAPE



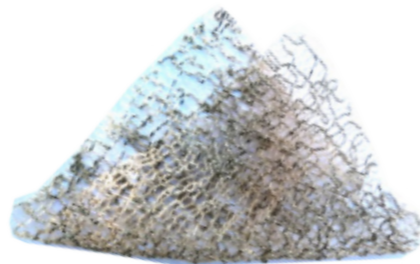




High-neck top in silver mesh. The fabric is semi-transparent and light. The top has darts on the front and on the back to create a very fitted shape. An invisible zip on the back. The sleeves are decorated with swarovski beads hand-sewn.



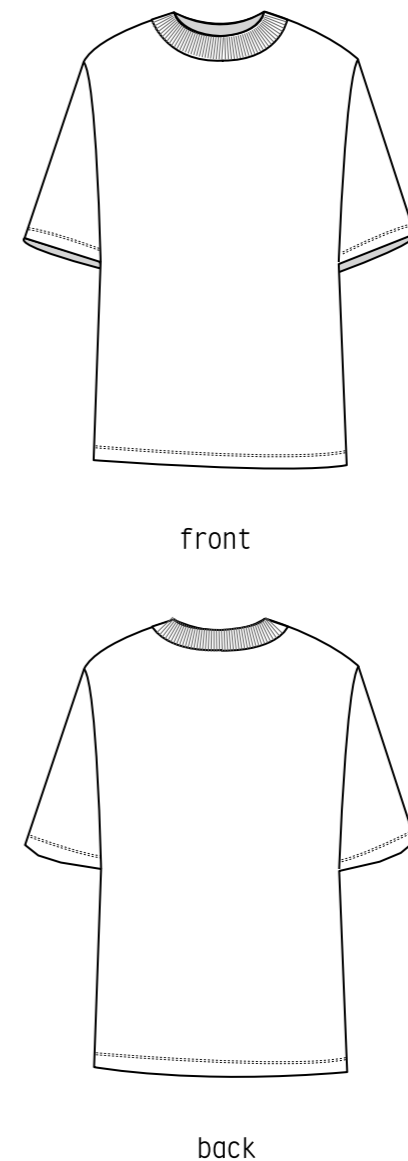
The gown is in silver mesh. It's semi-transparent and light. It's decorated with swarovski beads hand-sewn, the gown has a mermaid shape. There is an invisible zip on the side.



SILVER MESH



HAND-SEWN SWAROVSKI BEADS



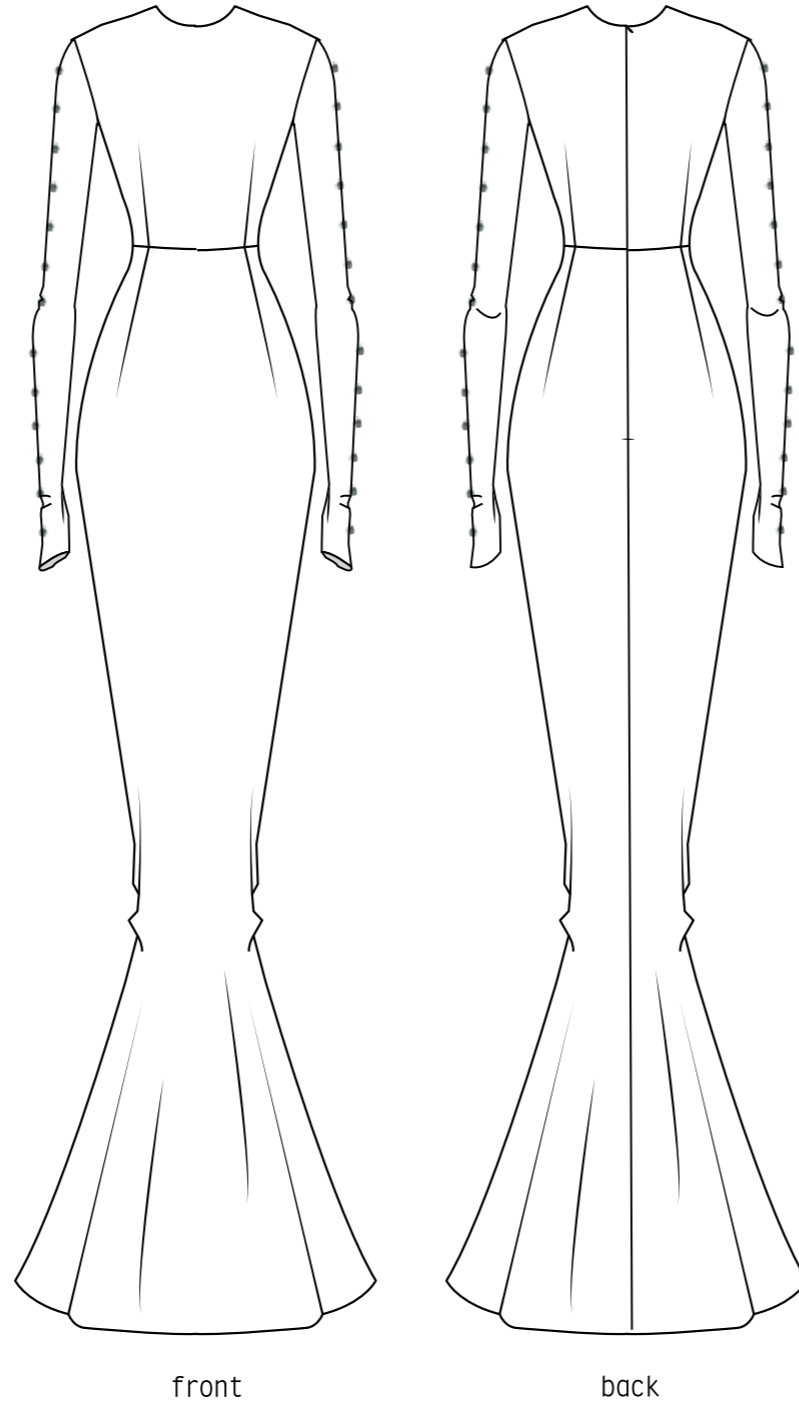
Boyfriend fit t-shirt with a print on the front. Black cotton jersey, with a cotton rib on the neck.



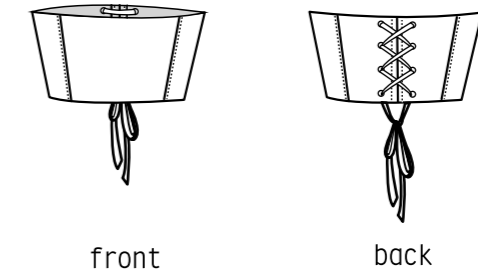
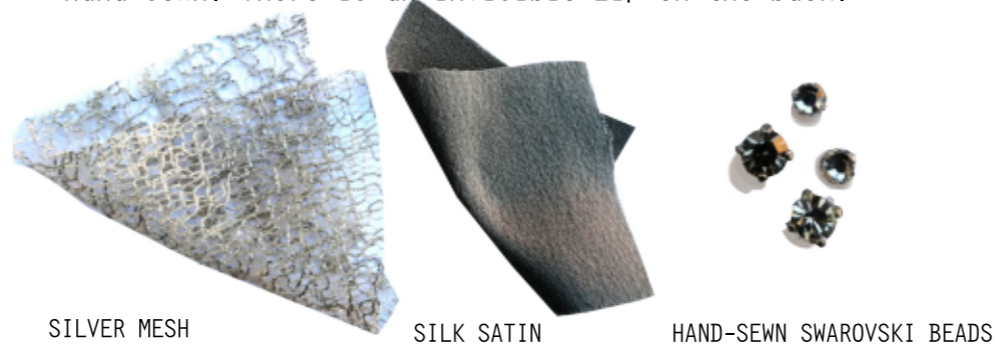
JERSEY



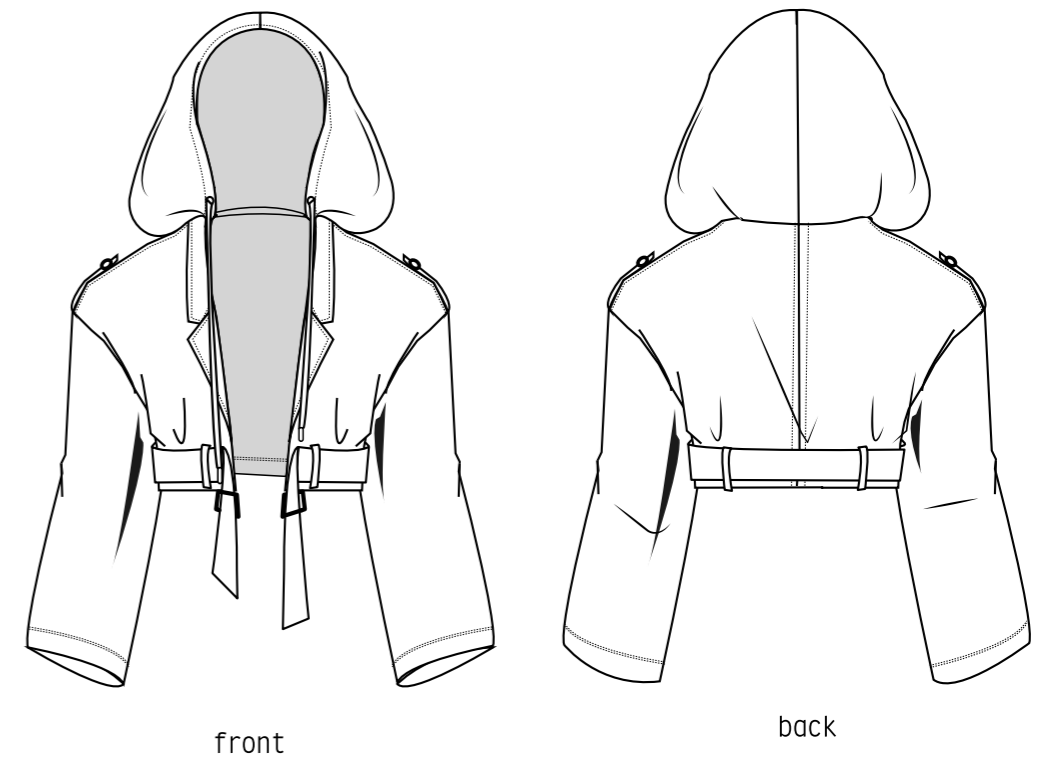
GRAPHIC



This dress is bimaterial: it's made with grey silk satin and silver mesh. It has a mermaid shape, a round neck and tight sleeves. The sleeves are decorated with swarovski beads hand-sewn. There is an invisible zip on the back.

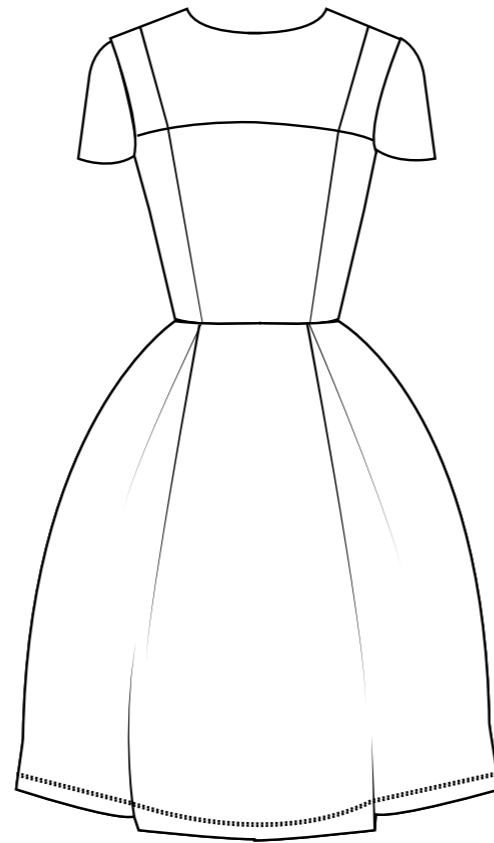


This is a corset in black eco-leather.

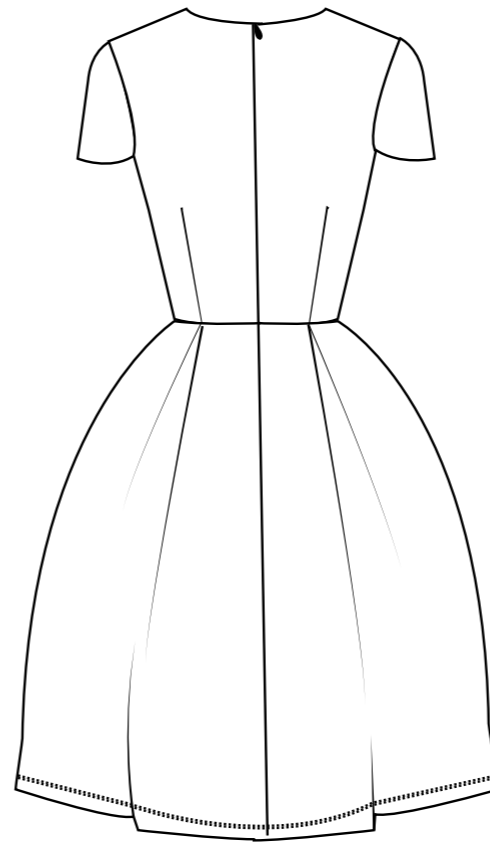


An oversized short jacket. The fabric has a geometric design created with white threads on the black base. The hood is in heavy jersey, with eyelet and cords. The neck has a classic design. There is a belt at the bottom. The lining is grey/silver. The jacket has 3/4 wide sleeves.

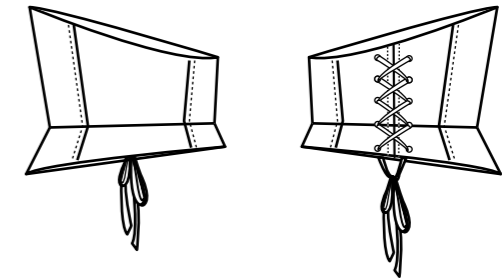




front



back



front

back

This is an asymetric corset in padded/stiffened velvet.



VELVET

A princess shape dress made with lace decorated with swarovski beads and pink silk satin.

It has a round neck and a short toght sleeve,
It's very fitted in the body part and the gown is very puffed with tullè and crinoline.



LACE



SILK SATIN